

# Multiport Valves

## 2) All lines and valve ports able to close

### Description

For valve specification see page 81 as guideline

### P&ID

→ Flow direction  
→ Drain direction  
✕ Valve

### Illustration

Actuators and other options are included in some of the illustrations

### 2.72)

#### MFE 4/4

2 x Valve horizontal

2 x Valve vertical

#### Back to back valve actuation

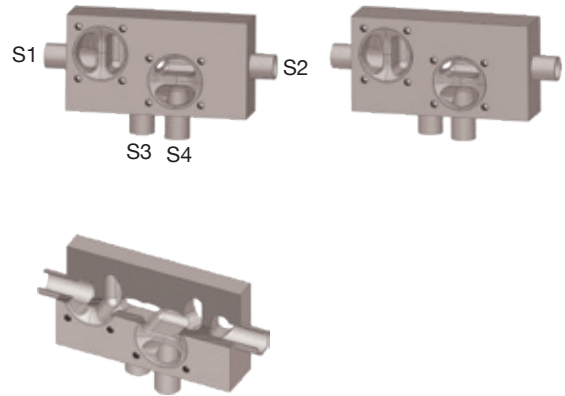
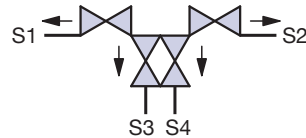
Recommended installation:

S3 and S4 vertical down

Dependent on design

and application

S3 and S4 vertical up



### 2.73)

#### MFE 4/4

2 x Valve horizontal

2 x Valve vertical

#### Back to back valve actuation

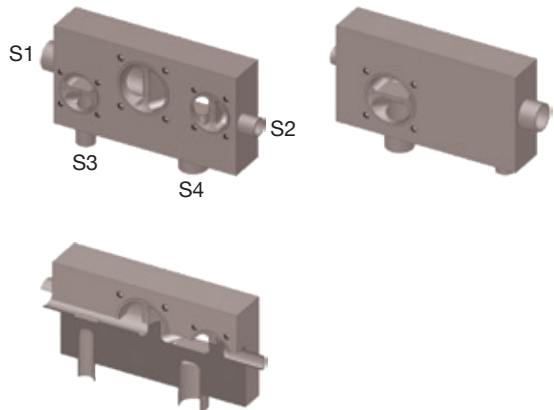
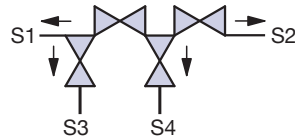
Recommended installation:

S3 and S4 vertical down

Dependent on design

and application

S3 and S4 vertical up



### 2.8)

#### MDE 4/4

#### no valve actuation on the back side

Chromatography valve without bypass

#### MDE 4/5

#### no valve actuation on the back side

Chromatography valve with bypass

Recommended installation:

S2 and S4 horizontal

S1 and S3 horizontal.

Or S1 to S4 horizontal

