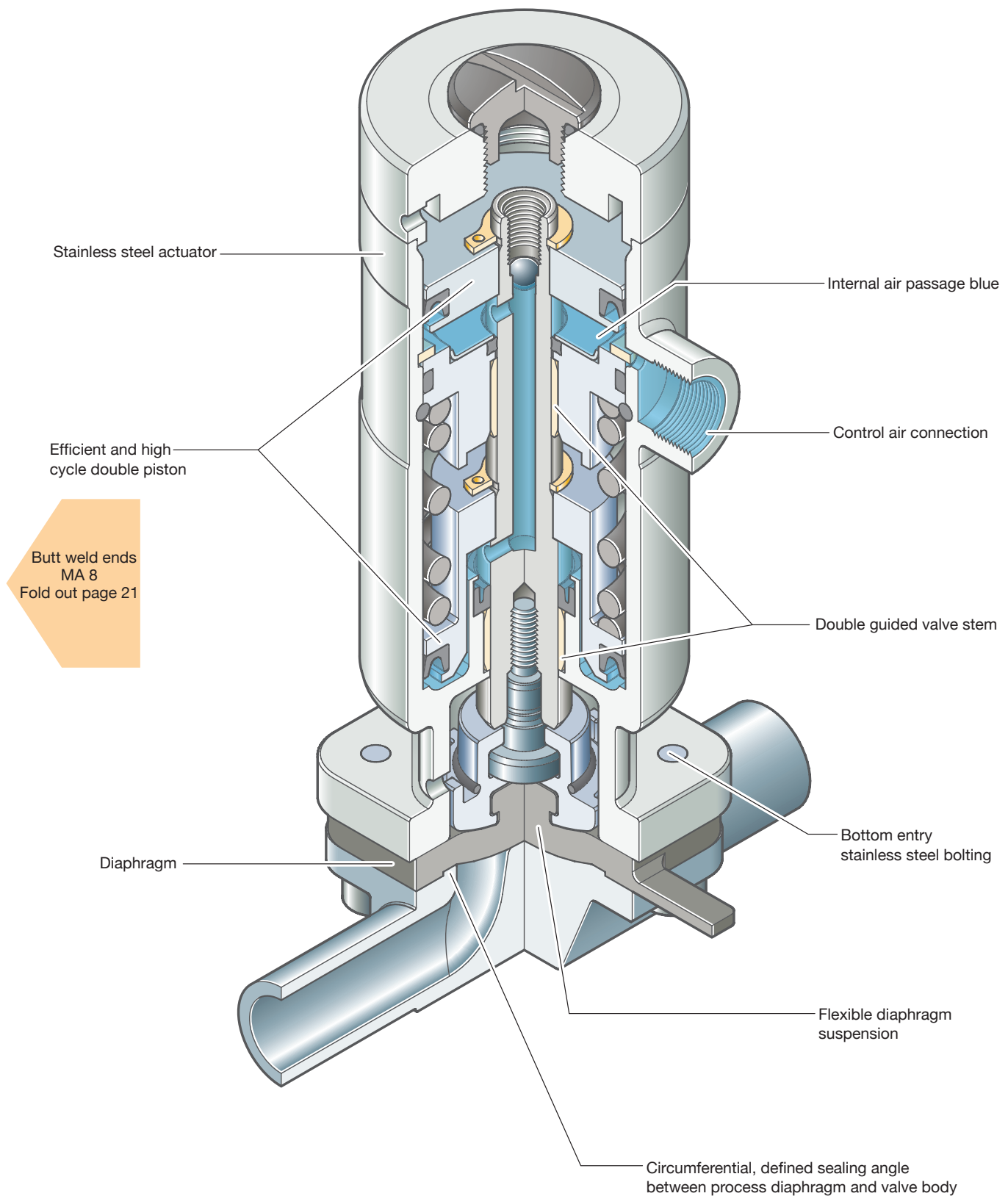


Steripur 217

Pneumatically Operated Valve DN 4 - 15 mm (1/4" - 1/2")



Sectional drawing shows Steripur 217.30

Pneumatically Operated Valve DN 4 - 15 mm (1/4" - 1/2")



217.30 Cf. 4



217.25 Cf. 5 & 6

This valve is available in two different designs.

The type 217.30 is available in the control function fail safe close and performs at a higher working pressure for standard application. The type 217.25 in control function fail safe close is mainly designed for filling applications or all other where the working pressure is lower. One advantages of this design are a longer diaphragm life time because there spring force is less. Other advantages of this design are a very high cycle life and a smaller overall dimensional height. Type 217.25 is also available in control functions fail safe open and double acting for standard working pressures.

Features

- **High cycle stainless steel piston actuator**
- Type 217.30 with double piston
- Compact design, the outside diameter of the actuator is the same size as the bonnet flange connecting diaphragm and body
- Advantages in multiport bodies and manifold valve assemblies
- Low control air volume, high switching speed
- High repeatability
- Control air connection on the top, away from the process product line
- Direction of control air connection is mountable in 90° rotations
- CDSA sealing concept, see page 32
- Flexible diaphragm suspension
- Clean and polished exterior design ideal for sterile wash downs

Optional

- Available with a wide range of control equipment and accessories see page 118 to 125 for this options
- Autoclavable

Technical Data

Control function (Cf.):	Pneumatically operated
217.30:	Fail safe close (NC): Cf. 1 & 4
217.25:	Fail safe open (NO): Cf. 2 & 5
	Double acting (DA): Cf. 3 & 6

Direction	At Cf. 4, 5 & 6 in flow direction, standard
Control connection:	At Cf. 1, 2 & 3, 90° to flow direction

Max. working pressure:	Unidirectional (delta p = 100%)
217.30:	Cf: Fail safe close EPDM diaphragm 8 bar (115 psi) PTFE diaphragm 7 bar (100 psi)
217.25:	Cf: Fail safe open and double acting EPDM diaphragm 8 bar (115 psi) PTFE diaphragm 7 bar (100 psi)

Higher working pressure may be achieved with different actuator. Please consult a SED factory representative for working pressure above the indicated maximum.

Max. working temperature: 160°C (320°F) dependent on application

Control pressure:	217.30:	Cf. 1 & 4	4 - 7 bar (60 - 100 psi)
	217.25:	Cf. 1 & 4	5,5 - 7 bar (80 - 100 psi)
		Cf. 2, 3, 5 & 6	5,5 - 7 bar (80 - 100 psi)

Diaphragm material:	EPDM or PTFE
Valve body material:	Forged 1.4435/ 316 L ASME/BPE Investment cast 1.4435/ 316 L Other alloys

End connection:	Butt weld ends see fold out page 21 Clamps and flanges see page 22 and 23 Special ends
-----------------	--

Actuators suitable for:	Two-Way bodies, Welded configurations, T-bodies, Multiport bodies, Tank bottom bodies
-------------------------	---

Flow rate:	Kv in m³/h (Cv in GPM) see page 9
------------	-----------------------------------

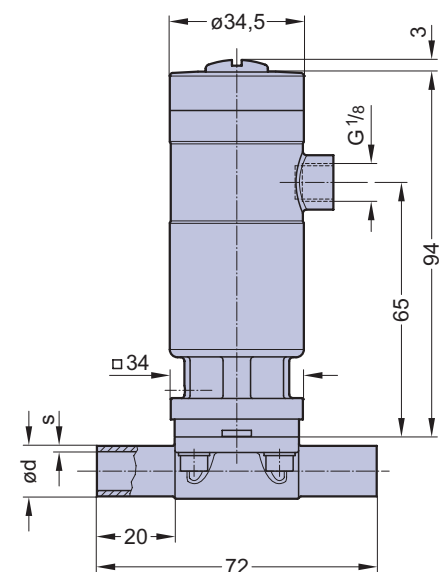
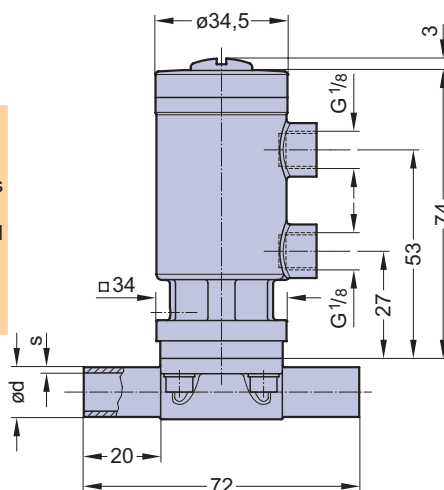
Diaphragm size:	MA 8
-----------------	------

Weight:	217.30: ca. 0,45 kg 217.25: ca. 0,44 kg
---------	--

Technical data also valid for multiport valve.

Type	MA	Filling volume (NL)	
		NC	NO/DA
217.25	8		0,013
217.30	8	0,013	

Butt weld ends
MA 8
Fold out page 21



Valve type overview see page 26 and 27.
Ordering key see page 59 to 61.