

# TRI-CLAMP 13MHP

## Heavy duty

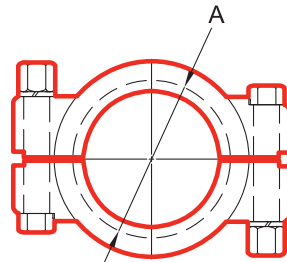
This clamp has a double bolt configuration, and is available in 304 stainless steel material with brass nuts as standard, for heavy duty.

All clamps are designed to meet ferrule standards such as: DIN32676, ISO2852, ISO1127, BS4825 and ASME BPE.



## Technical information

Sizes	see table, other sizes on request
Connections	Tri-Clamp
Material type	1.4301 (304)



229

Flange Size $\phi$	$\phi A$
25	31.75
34	37.0
50.5	53.59
64	66.90
77.5	80.59
91	93.98
119	122
167	170.05



**ROMYNOX**

RX: Q04

These are standard items. We also deliver other sizes.

For more and the latest information use the QR-code to go to the website.