

ADAPTER NPT THREAD FEMALE TO CLAMP

TC imperial - NPT Thread Female

Adapters are available as either male or female and are supplied with a NPT thread, and give a metal to metal seal. All threaded adapters are manufactured from solid 316L bar stock. This offers both excellent material properties and guarantees good controllable surface finishes.

The flanged clamping side of the NPT adapters is dimensioned and manufactured to 'mate up' directly with corresponding ferrules to BS4825, ISO & DN32676 standards.

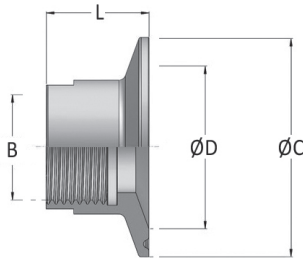
The datasheet shows the standard adapters, if you have special wishes feel free to contact us.



Technical information

216

Sizes	see table
Connections	Tri-clamp
Material	1.4404 (316L)
Finishes	Interior surfaces SF1
Certificates (st.)	3.1 material
Certificates (opt.)	2.2 surface finish



Clamp Size	Thread B	Flange C	Mating D	L
1/2"	1/8"	25	10.0	25
	1/4"	25	10.0	25
	3/8"	25	10.0	25
3/4"	1/2"	25	10.0	30
	5/8"	25	10.0	30
	3/4"	25	10.0	30
1"	7/8"	25	16.0	25
	1"	25	16.0	25
	1 1/8"	25	16.0	25
	1 1/4"	25	16.0	25
	1 1/2"	25	16.0	30
	1 3/4"	25	16.0	30
1 1/2"	1"	50.5	22.0	25
	1 1/8"	50.5	22.0	25
	1 1/4"	50.5	22.0	25
	1 1/2"	50.5	22.0	25
	1 3/4"	50.5	22.0	25
	2"	50.5	22.0	25
2"	1 1/2"	50.5	22.0	25
	1 3/4"	50.5	22.0	25
	1 7/8"	50.5	22.0	25
	2"	50.5	22.0	25
	2 1/8"	50.5	22.0	25
	2 1/4"	50.5	22.0	25
2"	1"	64	47.6	25
	1 1/2"	64	47.6	25
	1 3/4"	64	47.6	25
	2"	64	47.6	25



ROMYNOX

RX: F-D

These are standard items. We also deliver other sizes, according to ISO, DIN and SMS. For more and the latest information use the QR-code to go to the website.