

RUBBER FAB PTFE ENVELOPE GASKETS

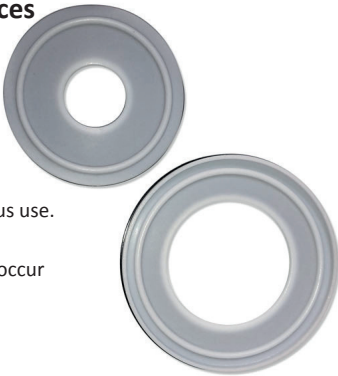
Beter resistance against temperature differences

PTFE Envelope gaskets have the same resistance to chemicals as solid PTFE.

They have almost no extractables, a low absorption rate and excellent resistance to process fluids. They can remain in service for longer periods of time in both water and steam for continuous use.

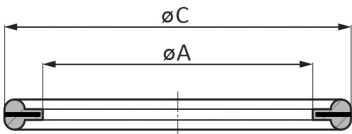
The fastening torque is less than with PTFE and leakage will not occur very fast.

Traceability by batch and lot number.



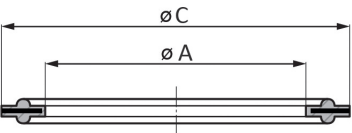
Technical information

Sizes	see table, other sizes on request
Connections	Tri-Clamp
Temp. range	-73°C to 260°C
Material type	PTFE, filled with FKM (Viton®) Optional filled with EPDM
Certificates (standard)	FDA, USP Class VI 121 °C/1hr, <87>, <88>, TSE/BSE, ADIF



Mini Gasket

Gasket configuration for all 25 mm flange sizes



Standard

Gasket configuration for flange sizes except 25 mm

Options

- Sterilization by autoclaving of the gaskets prior to packaging

Size	Flange $\varnothing C$	ID $\varnothing A$
¼" *	22	4.6
⅜" *	22	7.8
½"	22	9.6
¾"	22	16
1"	50.5	22.1
1½"	50.5	35.1
2"	64	47.4
2½"	77.5	60.5
3"	91	73.2
4"	119	97.5
6"	167	146.9



ROMYNOX

RX: WUK (Type 1) / WUL (Type 2) * Not Rubber Fab

These are standard items. We also deliver other sizes, according to ISO, DIN and SMS.
For more and the latest information use the QR-code to go to the website.