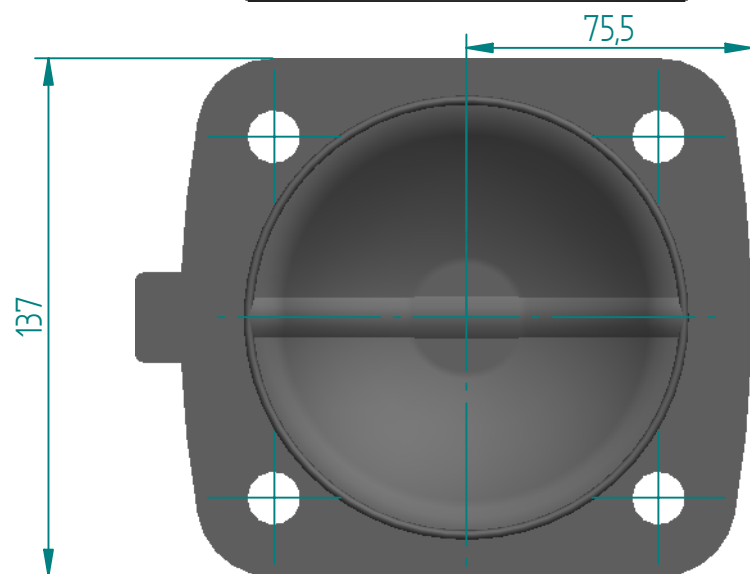
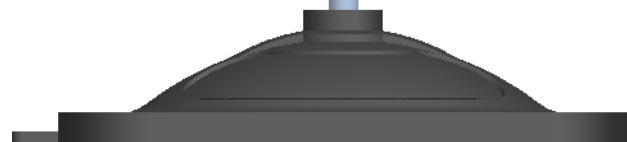


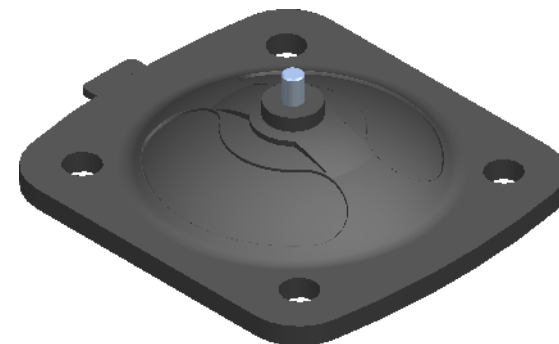
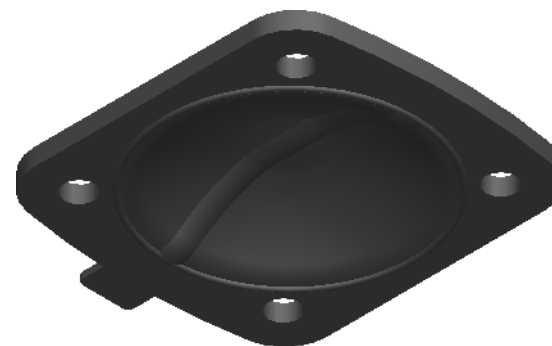
5/16" - Whitworth (INSERT SCREW)

 $\phi 14$ (4 Holes)

8

REVISION HISTORY

REV	DESCRIPTION	DATE	APPROVED

Scale
1:2.5

Replacement Diaphragm for :-
 OEM PART = 2.500-EF
 USED ON 2.5" (DN65) Diaphragm Valve

	NAME	DATE
DRAWN	M.MC KEON	08/21/14
CHECKED		

Material - EPDM

Complies with CFR 177.2600
 and Conforms to
 USP Class VI Biological Reactivity
 Tests Section #87 and #88

**DIAPHRAGM
DIRECT**

TITLE

DD25-SE7SIZE
A**ROMYNOX**REV
C

FILE NAME: DD25-SE7.dft

SCALE: 1:2 (mm)

ECO:0605

SHEET 1 OF 1

Disclaimer - Diaphragm Direct® does not manufacture, represent, nor sell OEM valves or diaphragms manufactured by any other company. Diaphragm Direct® brand diaphragms are not sponsored by any other manufacturers. Any name, model, part number, brand, image, material or referral is for descriptive purposes only. Diaphragm Direct® brand replacement diaphragms are guaranteed to fit OEM equipment and meet or exceed OEM specifications. Diaphragm Direct® brand replacement diaphragms are covered by the standard Diaphragm Direct® limited product warranty.