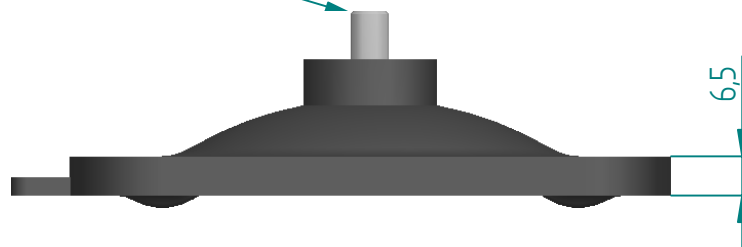
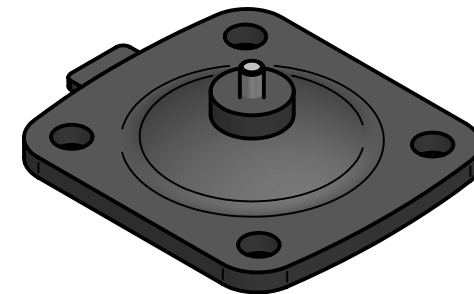


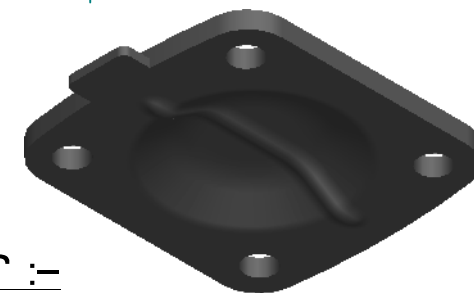
1/4" - Whitworth (INSERT SCREW)



Ø 11 (4 Holes)



SCALE  
1:2



Replacement Diaphragm for :-

OEM PART = 1.500-EF

USED ON 1.5" (DN40) Diaphragm Valve

	NAME	DATE
DRAWN	M.MC KEON	08/21/14
CHECKED		

**Material - EPDM**

Complies with CFR 177.2600  
and Conforms to

USP Class VI Biological Reactivity  
Tests Section #87 and #88



**DIAPHRAGM  
DIRECT**

TITLE

**DD15-SE7**

SIZE  
A

**ROMYNOX**

REV  
B

FILE NAME: DD15-SE7.dft

SCALE: 1:1.25

ECO:0605

SHEET 1 OF 1

Disclaimer - Diaphragm Direct® does not manufacture, represent, nor sell OEM valves or diaphragms manufactured by any other company. Diaphragm Direct® brand diaphragms are not sponsored by any other manufacturers. Any name, model, part number, brand, image, material or referral is for descriptive purposes only. Diaphragm Direct® brand replacement diaphragms are guaranteed to fit OEM equipment and meet or exceed OEM specifications. Diaphragm Direct® brand replacement diaphragms are covered by the standard Diaphragm Direct® limited product warranty.