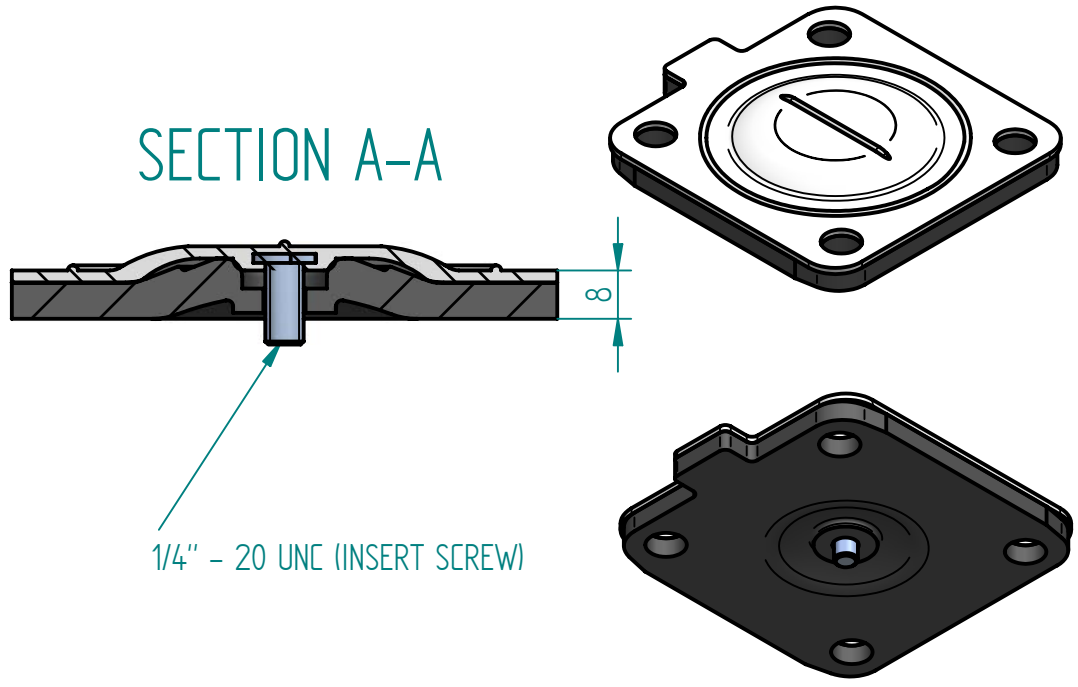


| REVISION HISTORY |             |      |          |
|------------------|-------------|------|----------|
| REV              | DESCRIPTION | DATE | APPROVED |

SECTION A-A





1/4" - 20 UNC (INSERT SCREW)

Replacement Diaphragm for :-

OEM PART = 600040-M-5E

USED ON 1.5" (DN40) Diaphragm Valve

|   |   |              |   |
|---|---|--------------|---|
|   | NAME  | DATE         |  <b>DIAPHRAGM DIRECT</b> |
| DRAWN   | M. MC KEON  | 08/30/14     |   |
| CHECKED   |   |              |   |
| <b>Material -</b><br><b>EPDM BACKING</b><br><b>PTFE - DIAPHRAGM</b><br>Complies with CFR 177.2600<br>and Conforms to<br>USP Class VI Biological Reactivity<br>Tests Section #87 and #88 |   |              | TITLE<br><b>DD15-GTFM-E</b>   |
| SIZE  |  |              | REV<br>B  |
| FILE NAME: DD15-GTFM-E.dft  |   |              |   |
| SCALE: 1 : 1  | ECO:0605  | SHEET 1 OF 1 |   |

Disclaimer - Diaphragm Direct® does not manufacture, represent, nor sell OEM valves or diaphragms manufactured by any other company. Diaphragm Direct® brand diaphragms are not sponsored by any other manufacturers. Any name, model, part number, brand, image, material or referral is for descriptive purposes only. Diaphragm Direct® brand replacement diaphragms are guaranteed to fit OEM equipment and meet or exceed OEM specifications. Diaphragm Direct® brand replacement diaphragms are covered by the standard Diaphragm Direct® limited product warranty.