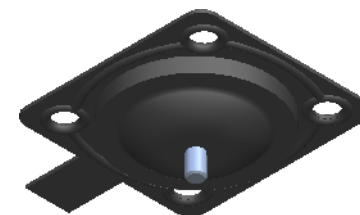
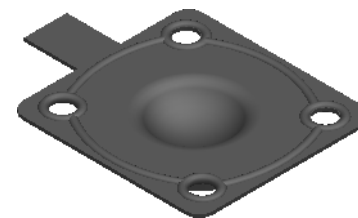
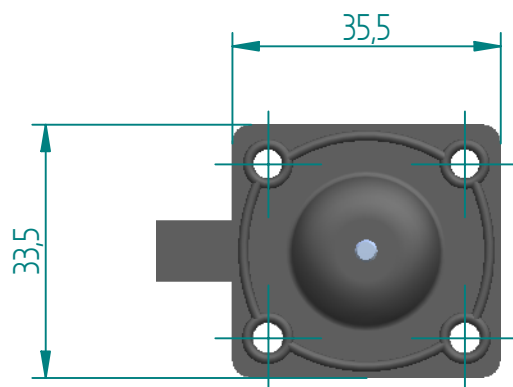


M3 x 0,5 (Insert Screw)





REVISION HISTORY

REV	DESCRIPTION	DATE	APPROVED

Replacement Diaphragm for :-

OEM PART = BE9

USED ON 1/4", 3/8", 1/2" (DN8,10,15,) Diaphragm Valve

	NAME	DATE	 DIAPHRAGM DIRECT	
DRAWN	M.MC KEON	09/19/14		
CHECKED				
Material - EPDM			TITLE	
Complies with CFR 177.2600 and Conforms to USP Class VI Biological Reactivity Tests Section #87 and #88			DD03-SE7-T	
			SIZE A	REV B
				
			FILE NAME: DD03-SE7-T.dft	
			SCALE: 1 : 1	ECO:0605 SHEET 1 OF 1

Disclaimer - Diaphragm Direct® does not manufacture, represent, nor sell OEM valves or diaphragms manufactured by any other company. Diaphragm Direct® brand diaphragms are not sponsored by any other manufacturers. Any name, model, part number, brand, image, material or referral is for descriptive purposes only. Diaphragm Direct® brand replacement diaphragms are guaranteed to fit OEM equipment and meet or exceed OEM specifications. Diaphragm Direct® brand replacement diaphragms are covered by the standard Diaphragm Direct® limited product warranty.