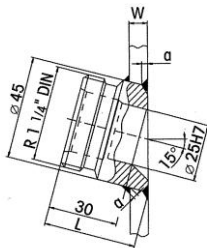


INGOLD® Fittings Standards Dimensions

INGOLD® is a registered trade mark of METTLER TOLEDO



Weld-in socket, inclined

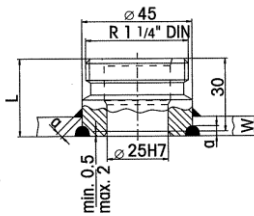
Weld-in socket $\phi 25$ mm, inclined 15°

W = tank wall 3 up to 8 mm

L = 40 mm, 48 mm, 55 mm

Material s/steel DIN 1.4404 (AISI 316L)

Blind plug in three lengths available with o-ring in silicone or viton



Weld-in socket, straight

Weld-in socket $\phi 25$ mm, straight

W = tank wall 3 up to 8 mm

L = 30 mm, 40 mm, 50 mm, 60 mm

Material s/steel DIN 1.4404 (AISI 316L)

Blind plug in four lengths available with o-ring in silicone or viton

Operating conditions :

The applied gasket (not included) may have a different design pressure and / or pressure. The weakest part in the assembled product set the final, permitted design pressure and temperature limits.

Material :

ASTM A 479 / ASTM A 182 – 316L (wn. 1.4404) or 1.4435 on request

Surface finish :

Product contact surface are machined with $Ra < 0,5$ micron or better
External surface scotch brite

Marking:

Each 16AMP clamp blind cap are marked with material designation and Heat No. for full lot traceability according to our QA routines.

Quality control:

The Quality Assurance system guarantees the control and traceability at all stages of the manufacturing.

Options:

For non-standard options, please contact us for further informations



Get the information you need and more at : info@aerreinox.it

In the interests of development and improvement of the product, we reserve the right to change the specifications without prior notice.